



**NORTH LONDON
PARTNERS**
in health and care

Primary Care Nursing

Nursing perspectives on General
Practice 'at scale'

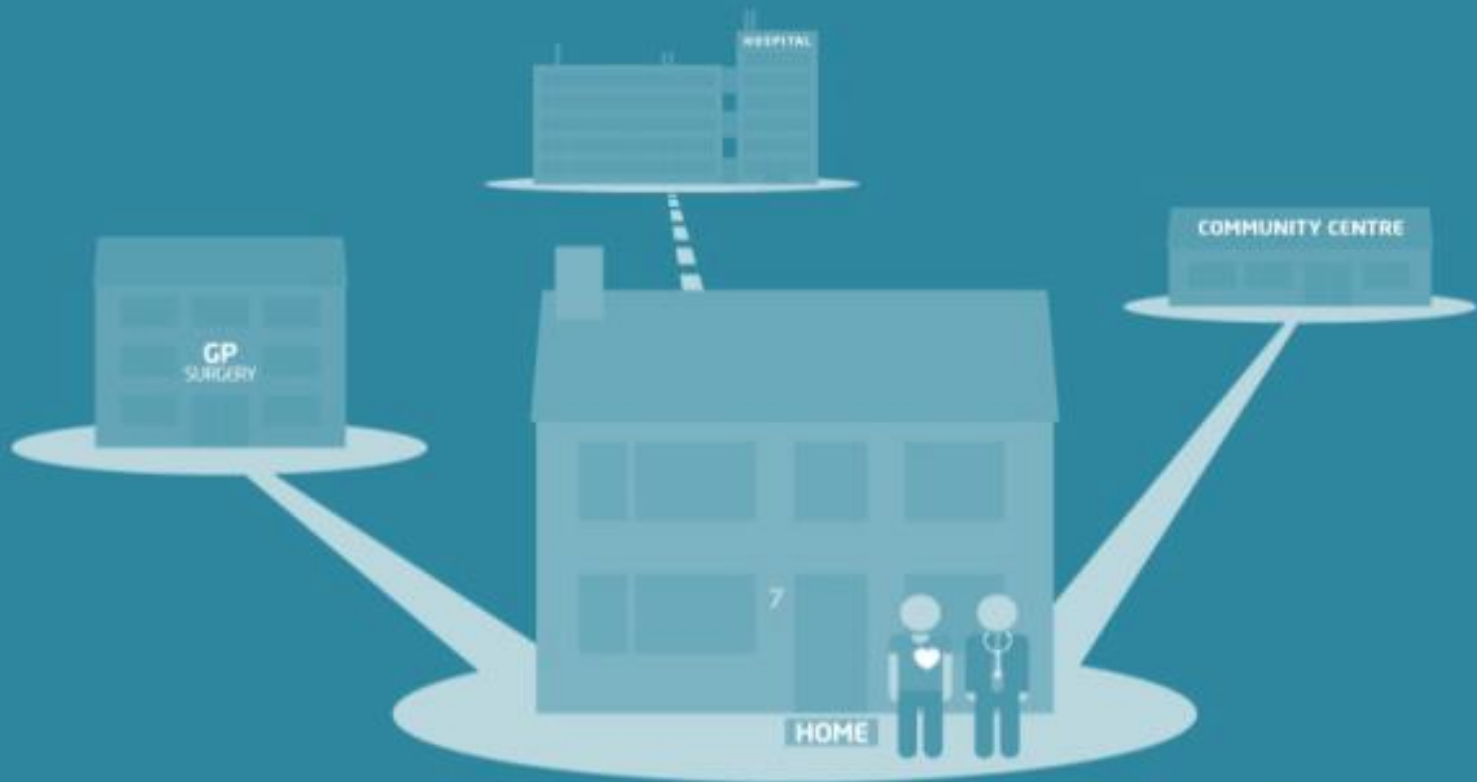
Katherine Gerrans – Lead Nurse, Quality & Workforce
Manager, Haringey CCG/CEPN.

Dr Gill Parsons – Barnet CEPN



**NORTH LONDON
PARTNERS**
in health and care

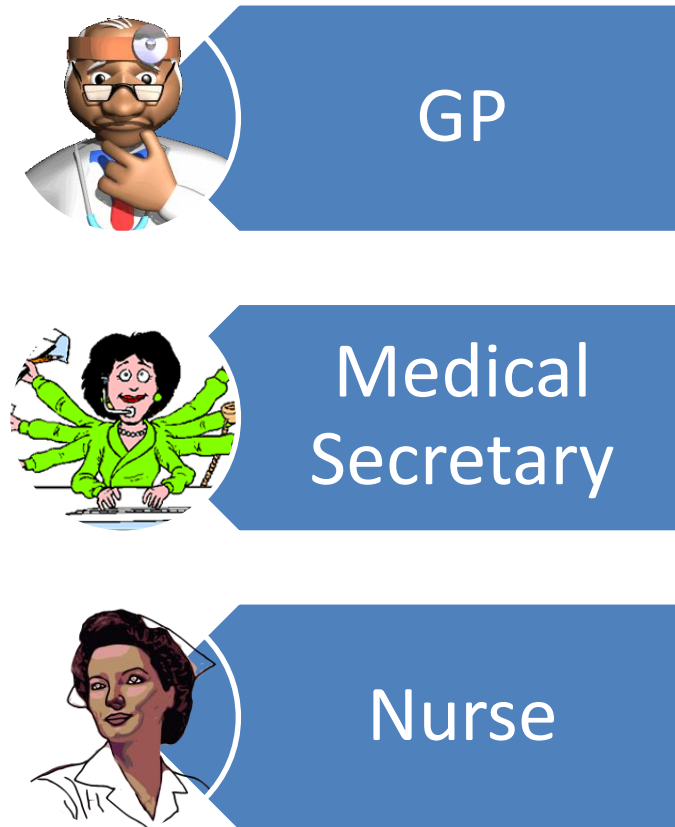
In the future, the increasing numbers of frail older people and more patients with long-term conditions will mean we need to rethink where and how care is delivered.



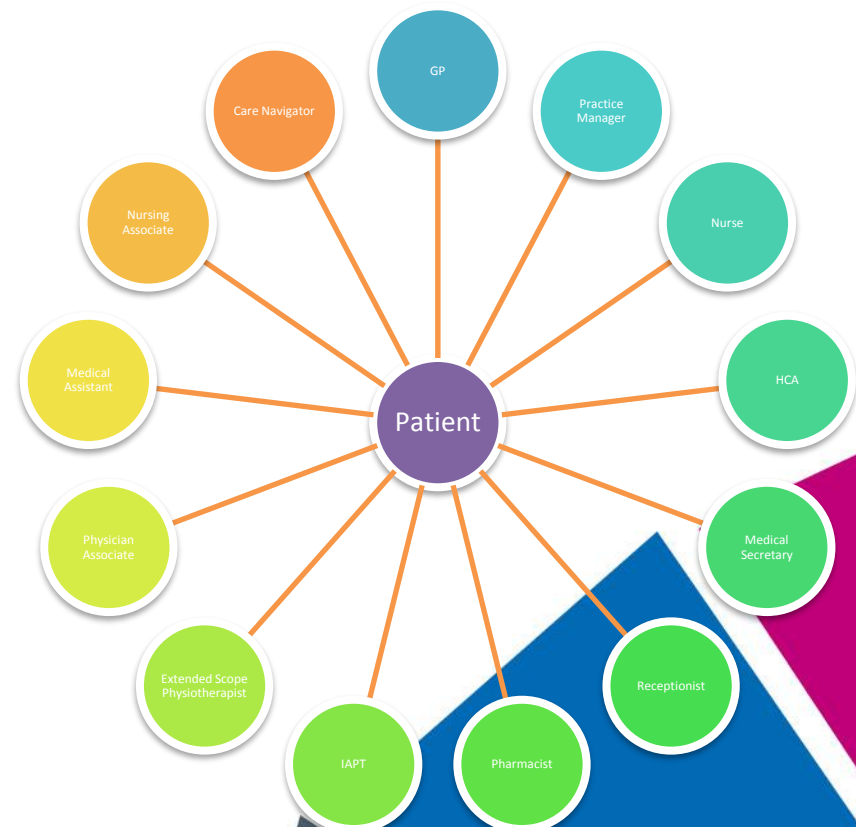
TheKingsFund

The changing face of general practice

1948



2018



Primary Care Nurses

- **General Practice Nurse**
 - Treatment room tasks e.g. wound care
 - Contraception and sexual health
 - Long term condition management e.g. annual reviews
 - Public health – e.g. vaccination
- **Advanced Nurse Practitioner**
 - ‘First contact’ care incl. diagnosis
 - Complex LTC care incl. multi-morbidity
 - Independent prescribing
 - Medication review
- **HCA**
 - Treatment room tasks
 - Health screening
 - Under supervision – often indirect
- **Nursing Associate**
 - New registered role
- **Community/District Nursing**
 - LTC & wound care – overlap with other roles?
 - Admission avoidance
- **Care Home Nursing**
 - Specialists in ‘frailty’

Examples of nursing contributions

Haringey & Islington

- Nurses appointed to Federation boards
- Governing Body membership of two nurses working in general practice
- Development of hub'n'spoke models for training placements working closely with Middlesex University
- GPN training programme (HEE funded) – across Camden, Islington and Haringey
- Developing a career training pathway from receptionist via HCA to Registered Nurse using apprenticeship funding
- Urgent care training fellowships in Islington
- Nursing posts in QISTs
- QI training and network (NCL)

Barnet

- Faculty of facilitators now include nurse mentors (delivering multi-professional education)
- Nurse attendance multi-professional collaborative learning groups (MCLGs)
- Nurse attending GP trainers workshop & participating in approval process
- PN educator honorary contracts HEI (Herts university) – supporting student & qualified GPN training programme (HEE funded) – management and learning sets
- QI training
- CEPN nurse lead & CCG nurse lead (CEPN Board members) plan CPD/lead nurse forum & HCA academy (increasing “political” awareness)

Local Integrated Networks

- Opportunity to include nursing perspectives in the development of new models of care
- Practice Nurses are well placed to offer patient-centric models in conjunction with their community nursing colleagues
- Service improvement projects and QI could involve a variety of settings e.g. care homes



Nursing Leadership

- Nurses often have a different perspective to their medical colleagues
- How do we hear and value this voice?
- Do you recognise those nursing leaders?
- How do we enable them to lead?





**NORTH LONDON
PARTNERS**
in health and care

Shared leadership requires:

- Mutual respect
- Shared vision
- Understanding & acknowledging each others' contributions/skills